

# OUTSPOKEN



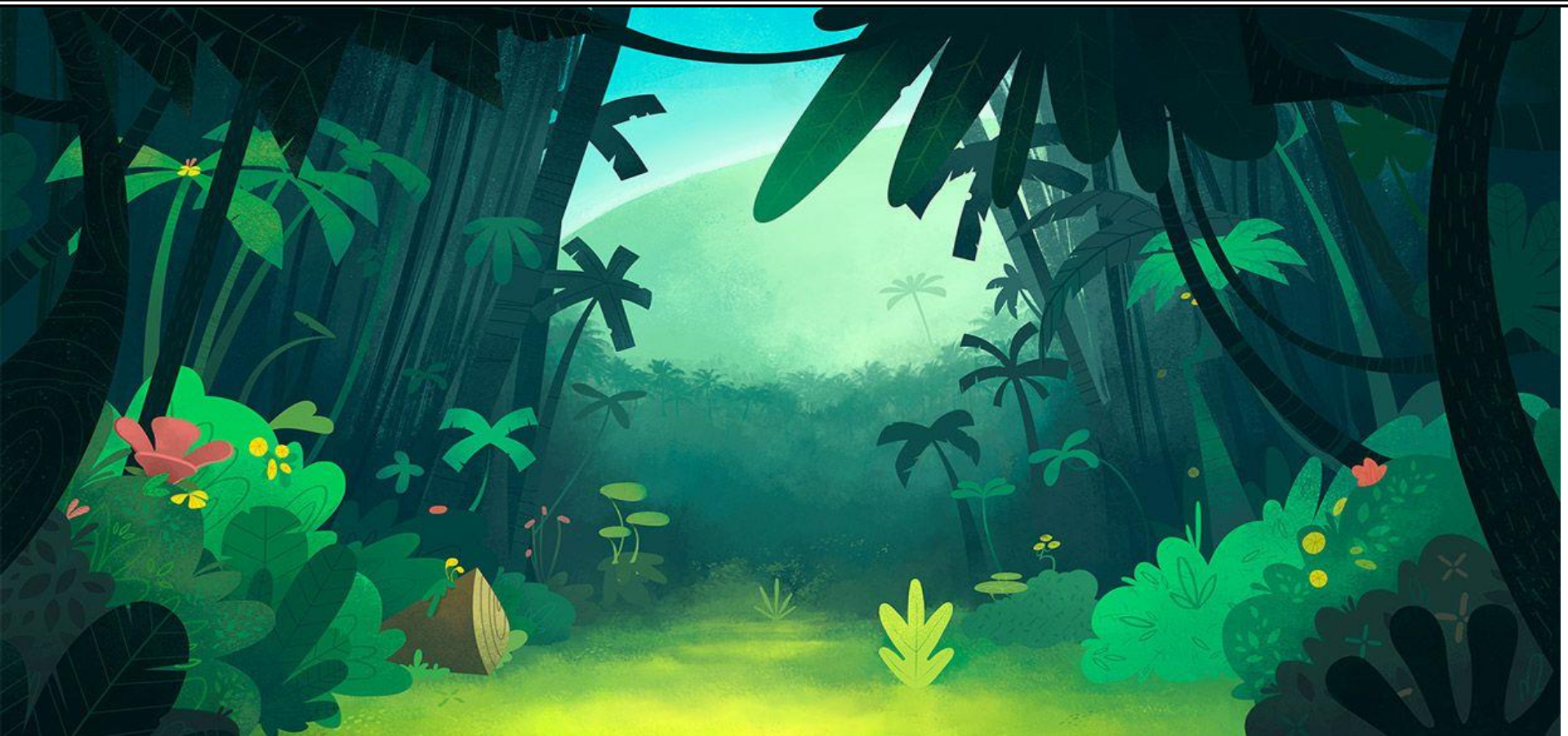
*Designed by students for 21st  
century dreamers*



OUTSPOKEN

**CUT THE  
GREED,  
NOT THE  
GREEN!**

[shoutslogans.com](http://shoutslogans.com)



# Joke of the Day

- *Here is a question for you.....What kind of plant grows on your hand?*

— *Palm tree.*





## LEARNING OUTCOMES



### **THEME- Environment**

**1. ICEBREAKER**

**3. SNAKES AND LADDER**

**4. Main Competency Skill-OUTSPOKEN  
TALK-SHOW**




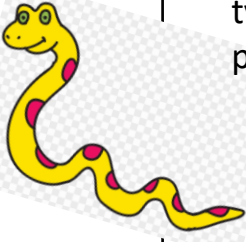

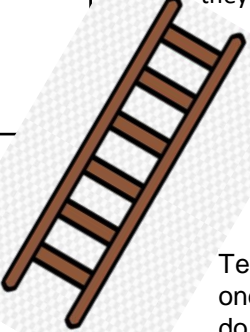

# ICEBREAKER

- Let's play a very interesting game, it's called "The last letter". I am going to say a word. The last letter of the word must be the first letter of the next sentence that you will say. For example, you will say a word, such as "dog".
- -One of you must reply with a word starting with "G," such as "girl". When answered, the next student will continue the game. The sequence may then be (for example):
- Girl, look, king, go, octopus, student ... and so on.
- I will be adding categories like Food, Animals, and Sports.
- i.e., student A = "Cat" student B = "Tortoise," student C = "Elephant," etc.

# SNAKES AND LADDER

- We all have played Snakes and Ladder game at least once in our lives. You all will roll a die, say what number you land on and answer the question according to the number. If you land on a space with a ladder, you have to climb to the space where the ladder leads to. If you land on a snake, you have to go down to the tail of the snake. The student who reaches the finish space will win the game.
- You will start at the bottom, and try to go all the way to the top. Overall, the winner is the first one to make it to the top of the game board.
- Be wise and witty while answering the questions.... All the best!

# SNAKES AND LADDER

<p><b>20</b></p> <p><b>FINISH</b></p> 	<p><b>19</b></p> <p>You caught some insects and did not release them back.</p> 	<p><b>18</b></p> <p>What stories have you heard or read recently about the environment?</p>	<p><b>17</b></p> <p>In your opinion, which country causes the most pollution?</p>	<p><b>16</b></p> <p>What happens when we destroy forests?</p> 
<p>What can be done to save our environment?</p>	<p><b>14</b></p> <p>You planted a tree</p>	<p><b>13</b></p> <p>You used plastic bag in the grocery store</p> 	<p><b>12</b></p> <p>Can you name a few types of pollution?</p>	<p><b>11</b></p> <p>You collected rain-water</p>
<p><b>10</b></p> <p>Describe the natural environment of your country</p> 	<p><b>9</b></p> <p>Give two ideas to save water</p>	<p><b>7</b></p> <p>Which is the most beautiful place in the world? Why do you like it?</p>	<p><b>7</b></p> <p>What would you say to people who throw rubbish wherever they go?</p> 	<p><b>6</b></p> <p>You wasted water and did not turn off the tap after use</p> 
<p><b>START</b></p> <p><b>1</b></p> <p>What are some things which you recycle?</p>	<p><b>2</b></p> <p>Think of a place where there is no pollution at all, where is it?</p>	<p><b>2</b></p> <p>You saved water by using a bucket</p>	<p><b>4</b></p> <p>Tell about one thing you do to help the environment.</p>	<p><b>5</b></p> <p>What steps do you take to save energy at home?</p>

# OUTSPOKEN TALK-SHOW

Today we will be conducting an OUTSPOKEN TALK-SHOW. You are going to have a "TV Discussion" in which you will be answering the questions that the "TV-viewers" have sent you. I will **give enough time to all of you for preparing your roles. You can use the internet for this purpose.**

I am going to throw a dice. E.g. When the dice shows 3, the student from the category "Doctor", will pick a question. It means that the question is addressed to a doctor.

The student whose turn it is will read the question aloud. If he\she is unable to give an appropriate answer, then some volunteer will give an answer to win bonus points.

**Students will prepare for their categories/roles in advance so that they are able to speak fluently.** (Last Class)

- They will be assigned one of the following roles-
- 1– A Scientist who is studying the harmful effects of deforestation
- 2 – A poor farmer who is dependent on rainfall for his crops
- 3 – The forest officer who loves animals dearly
- 4 – A local villager who has become homeless due to the plastic bottle manufacturing plant.
- 5 – An environment activist who cares about nature.
- 6 – A wealthy industrialist who owns the plastic bottle manufacturing company.

**NOTE-** The tutor will be the hosting the show.



# OUTSPOKEN TALK-SHOW

## TALK SHOW- ROLE PLAY QUESTION CARDS

### 1- A Scientist

Why do you think recycling is important?

Can you suggest some ideas to save the environment?  
Share a real life experience on environmental issues.

### 2 - A poor farmer

What kind of crops do you grow? What are the difficulties that you face?  
What do you do when it does not rain?  
How should the government and the people help you?

### 3 - A doctor

Why did you decide to treat patients free of cost?  
What kinds of problems are faced by the local people in your village?  
Share an experience from your life that can inspire people to help others?

### 4 - A local villager

How did you become homeless?  
Did the government help you in any way?  
What do you think were the reasons of deforestation in your village?

### 5 - An environment activist

What does an environmental activist do? Why did you become one?  
Why do you think it is important to save the environment?  
Share a real life incident when your efforts helped in saving the environment.

### 6 - A wealthy industrialist

We have learnt that you have earned billions of rupees after setting up a new plastic bottle manufacturing unit. Is it true?

Why do you believe that the idea of recycling plastic is a lie and does not work?  
Many villagers have lost their land and forests have been cleared for setting up a new manufacturing unit.  
What do you have to say about this?